

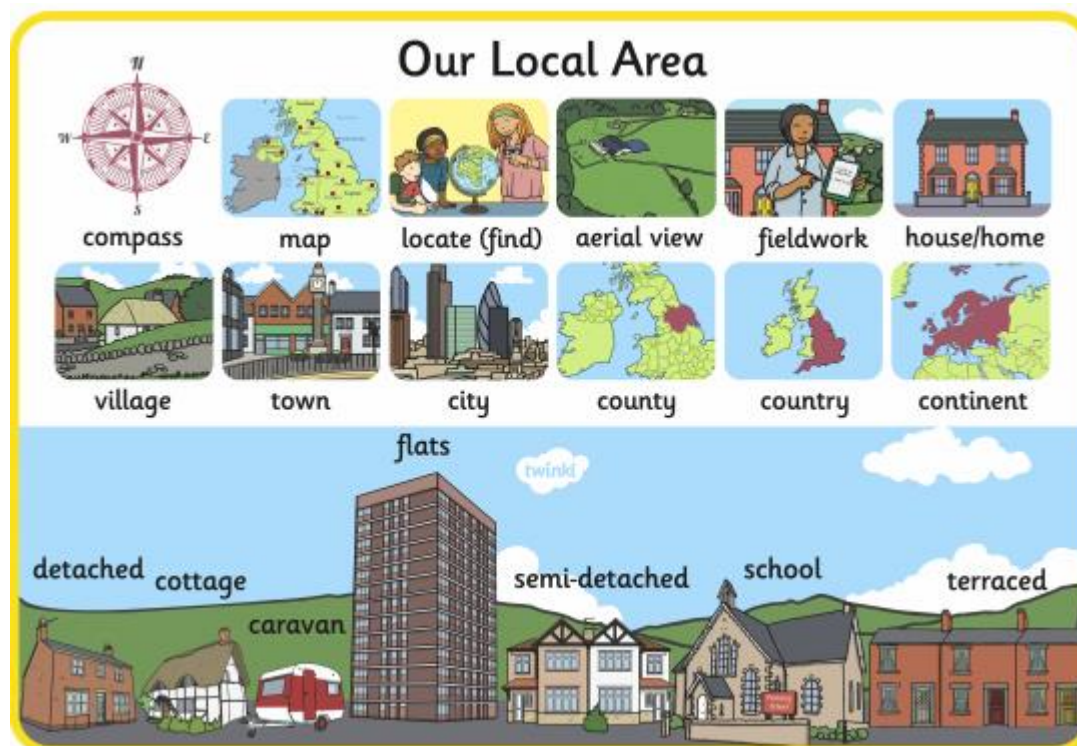
Key vocabulary

local area
school
home
address
compass
directions
position
North / South / East / West
fieldwork
local area
locate (find!)
street map
observe
record
route
safety
map
symbols
street
house/houses
offices
business
shops
stream
river
forest
key
title

detached
semi-detached
terraced
cottage
bungalow
flats
caravan
job
work
pay/wages
tally chart
pictogram
Village
town
city
county
country
continent
council
improve

Geography – Our Local Area

Year 1 Knowledge Organiser



Key information about our local area:

Our school, Neroche Primary School, is **located** in the **village** Broadway. Broadway is near the **town** Ilminster. They are both in the **county** Somerset and the **country** England. In the local area there are a range of **houses**, **cottages** and **farms**.



Ways to use your knowledge

organiser at home

Knowledge Organisers have some important information that you will need for your topic. Below are some ideas for how you can use your knowledge organiser at home.

1. Look up your key vocabulary using a dictionary to find out what each of the words mean and put them into sentences.
2. **LOOK, SAY, COVER, WRITE, CHECK:** Read a specific part from the knowledge organiser; read out loud the information; cover the information; and write out everything you can remember! Then, check it is correct.
3. Draw everything you can remember from the knowledge organiser in picture form.
4. Mind ma: write everything you know about your topic.
5. Write a quiz and answer: construct quiz questions from the information in the knowledge organiser and see if you can get a family member to take part.
6. Draw out diagrams of key terms (where possible) and label them.
7. Create an art image linked to the topic.
8. Write a short information text about your topic.